

LIQUID LEVEL GAUGES

8800 SERIES BULK TANK GAUGE WITH 90 DEGREE CONNECTIONS



APPLICATIONS:

For low to medium pressure applications up to 500 psig, including oil or fuel storage tanks, cooling tower water tanks, and boiler feedwater tanks.

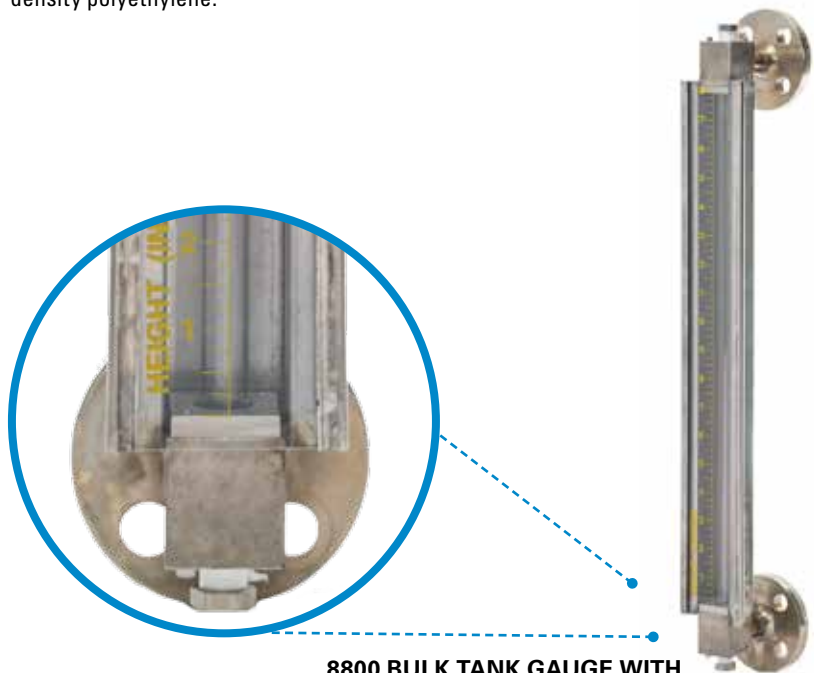
FEATURES:

The 8800 Series Level Gauge features 90 degree connections for ease of installation and minimal loss of visual indication. The Gauge is fitted with inline 1/4" FNPT vent and drain connections for routine sight glass maintenance.

The centerline dimensional tolerance is $\pm 1/16"$. This assures that the gauge will fit the mounting connections of the tank.

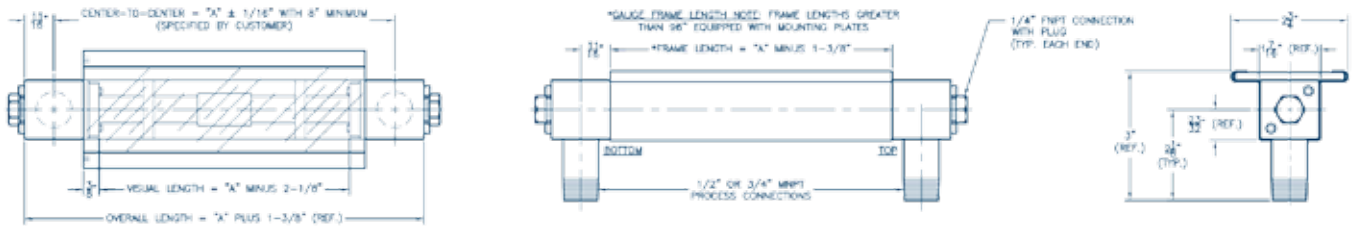
The sight tube of the 8800 Series Level Gauge is totally protected. Three sides of the gauge are enclosed with a metal frame, while the face of the gauge is protected with an expanded metal or impact resistant polycarbonate shield. The polycarbonate shield can be custom calibrated to read tank volume or any other calibration. Refer to the Shield Specifications on page 12 to see the assortment of standard shield options.

The gauge frame is available in carbon steel or 304 stainless steel. A 316 stainless steel frame available upon request. A wide variety of wetted materials are available, including carbon steel, 316 stainless steel, alloy 20, Hastelloy C-276, PVC, CPVC, Kynar, and high density polyethylene.

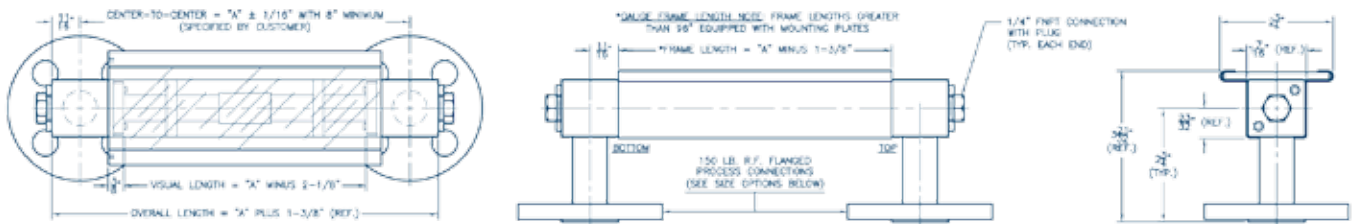


**8800 BULK TANK GAUGE WITH
OPTIONAL FLANGE CONNECTIONS**

8800 SERIES LEVEL GAUGE WITH THREADED PROCESS CONNECTIONS



8800 SERIES LEVEL GAUGE WITH FLANGED PROCESS CONNECTIONS



• Drawings above represent models with metal process connections.

ORDERING GUIDE 8800 Series Level Gauge

REQUESTED BY: _____ COMPANY: _____

ADDRESS: _____ CITY: _____ STATE: _____ ZIP: _____

PHONE: _____ FAX: _____ EMAIL: _____

88

Gauge Style

88=Gauge with 90° Connections

Process Connections

M50=1/2" MNPT
M75=3/4" MNPT
FL50=1/2" 150# R.F. Flange
FL75=3/4" 150# R.F. Flange
FL10=1" 150# R.F. Flange
FL15=1-1/2" 150# R.F. Flange
FL20=2" 150# R.F. Flange
(Other Flange Sizes/Ratings Available upon Request)

Center-to-Center Dimension (inches)

Material of Construction

C=Zinc Plated Carbon Steel
A=Stainless Steel
PC=PVC Wetted Parts
w/Carbon Steel Frame
PS=PVC Wetted Parts
w/Stainless Steel Frame
Other (Please Specify)

Seal Material

V=Fluorocarbon
A=Aflas
B=Buna-N
T=FEP Encapsulated Silicone
E=Ethylene Propylene
(Other Materials Available upon Request)

Shield Options*

L=Clear Polycarbonate
H=Height Scale
RH=Rate Height Scale
MH=Metric Height Scale
MRH=Metric Rate Height Scale
M=Expanded Metal Guard

Sight Tube Options**

GS=5/8" O.D. Glass
RL=5/8" O.D. Redline Glass
(Other Materials Available upon Request)

Maximum Working Pressure (PSIG)

Maximum Operating Temperature (°F)

Steam

S=Steam Application
NS=Non-Steam Application

• Example Order Number: 88M50-68-PSTMH-GS-105-100-NS

* See page 12 for shield descriptions.

** Based on application data provided, KENCO will select the appropriate sight tube material, i.e. high pressure glass.