

CALIBRATION POTS

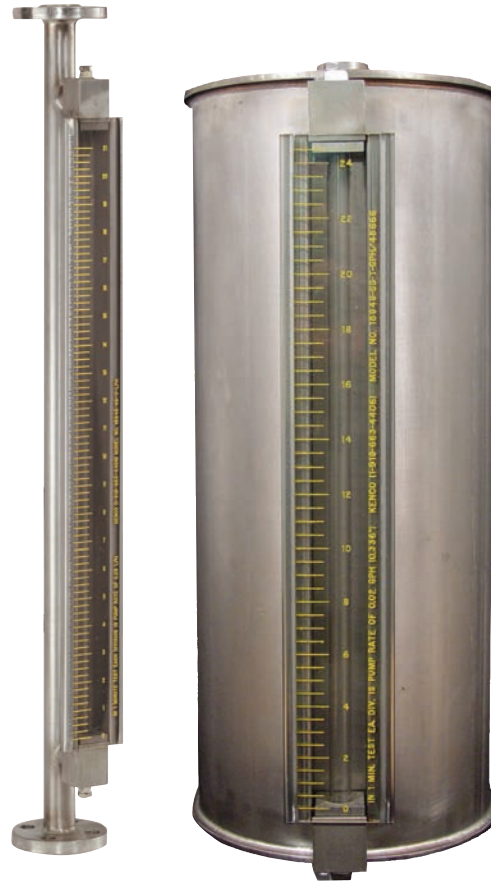
CALIBRATION POTS FOR CALIBRATING CHEMICAL PUMPS

APPLICATIONS:

Calibration Pots provide an accurate pump calibration of higher pump flow rates. The totally enclosed construction assures maximum safety. The gauge is installed between the suction side of the chemical pump and the tank. The pump rate is checked by closing the valve between the tank and gauge and observing the level change in the gauge for one minute.

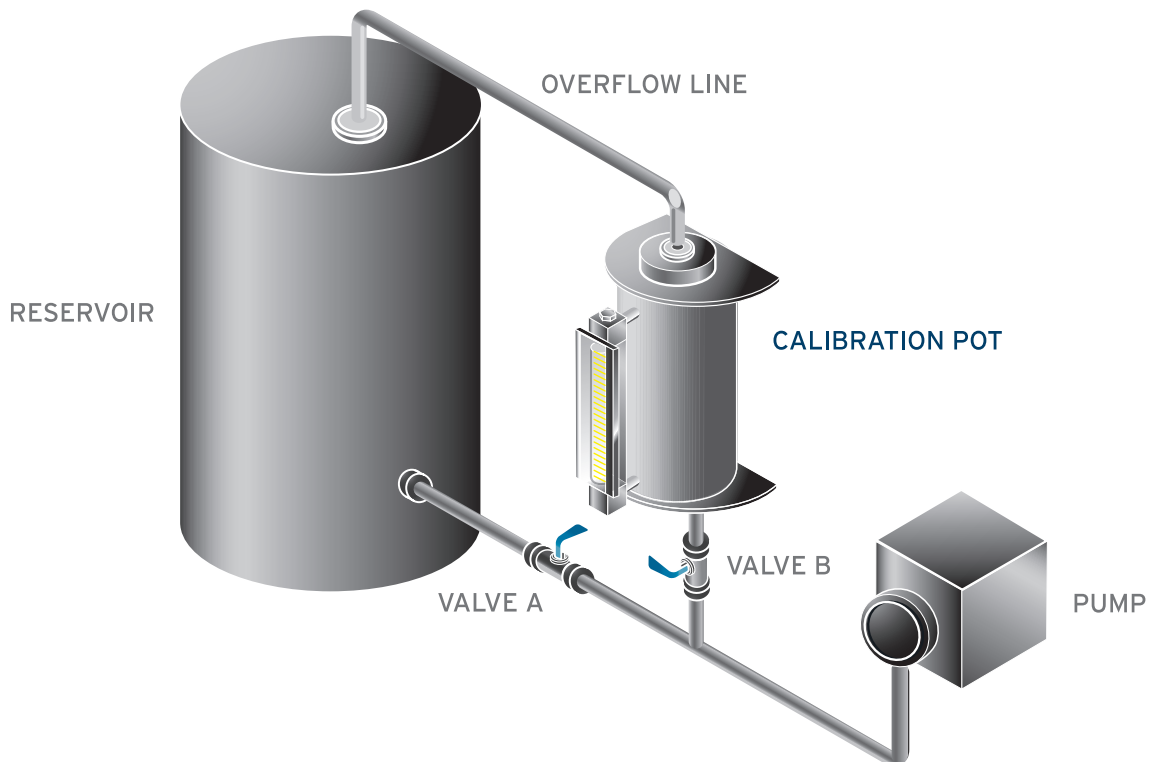
EQUIPMENT FEATURES:

- Design utilizes a tank with shielded tubular gauge for maximum protection from glass breakage
- Provide a means for accurately checking the feed rates of a chemical metering pump
- Manufactured in PVC, Carbon Steel and 316 Stainless Steel as standard materials. We can provide other materials to meet your chemical resistance requirements.
- Individually hand calibrated to assure maximum accuracy
- Customization is always an option, give us your design criteria and we will design a gauge to fit your needs and specifications

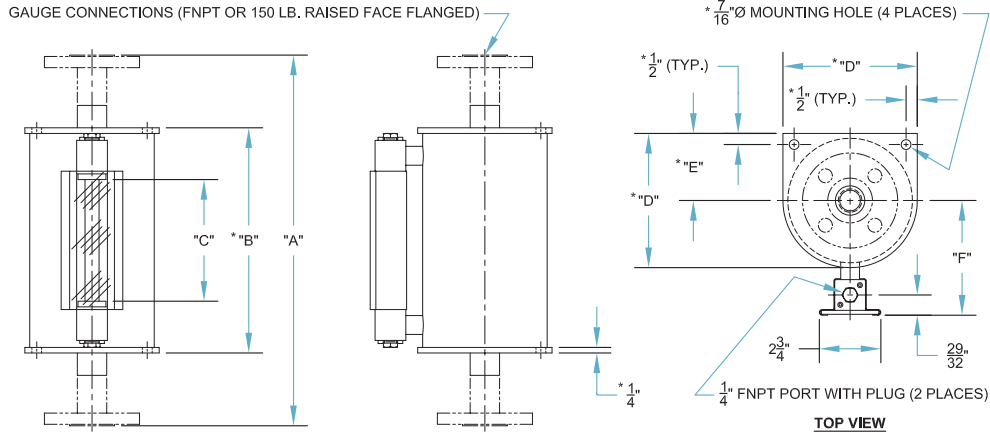


CALIBRATION POTS AVAILABLE WITH FLANGED OR THREADED CONNECTIONS

COMMON APPLICATION



CALIBRATION POTS



CALIBRATION POT SPECIFICATIONS

GAUGE SPECIFICATIONS														
MODEL NUMBER (CONNECTION SIZE)		MAXIMUM PUMPING RATE (BASED ON A 1 MINUTE TEST)				GAUGE VOLUME		A		* B	C	* D	* E	F
THREADED	FLANGED	GPH	GPD	LPH	LPD	GBV	LBV	FNPT	FLGD.					
15842 (3/4" FNPT)	15843 (3/4" 150#)	2.5	60	9.46	227.12	0.04	0.16	21-7/16"	24-3/8"	N/A	15-3/4"	N/A	N/A	2-7/8"
15844 (3/4" FNPT)	15845 (3/4" 150#)	5	120	18.93	454.25	0.08	0.32	26-11/16"	29-5/8"	N/A	21"	N/A	N/A	3"
15846 (3/4" FNPT)	15847 (3/4" 150#)	10	240	37.85	908.5	0.17	0.63	25-11/16"	30-5/8"	24-1/8"	19-1/2"	2-3/8"	1-3/16"	3-9/32"
15848 (1" FNPT)	15849 (1" 150#)	20	480	75.71	1816.99	0.33	1.26	23-5/8"	28-3/8"	21-7/8"	17-1/4"	3-1/4"	1-5/8"	3-25/32"
15850 (1" FNPT)	15851 (1" 150#)	40	960	151.42	3633.98	0.67	2.52	28-7/8"	33-5/8"	27-1/8"	22-1/2"	3-7/8"	1-15/16"	4-3/32"
15852 (1" FNPT)	15853 (1" 150#)	60	1440	227.12	5450.98	1	3.79	26-3/8"	31-1/8"	24-5/8"	20"	4-7/8"	2-7/16"	4-19/32"
15854 (1-1/2" FNPT)	15855 (1-1/2" 150#)	80	1920	302.83	7267.97	1.33	5.05	22-3/16"	26-5/8"	20-1/8"	15-1/2"	6"	3"	5-1/8"
15856 (1-1/2" FNPT)	15857 (1-1/2" 150#)	100	2400	378.54	9084.96	1.67	6.31	26-3/16"	30-5/8"	24-1/8"	19-1/2"	6"	3"	5-1/8"
15858 (2" FNPT)	15859 (2" 150#)	120	2880	454.25	10901.95	2	7.57	24-5/8"	28-5/8"	22-1/8"	17-1/2"	7"	3-1/2"	5-21/32"
15860 (2" FNPT)	15861 (2" 150#)	140	3360	529.96	12718.94	2.33	8.83	27-5/8"	31-5/8"	25-1/8"	20-1/2"	7"	3-1/2"	5-21/32"
15862 (2" FNPT)	15863 (2" 150#)	280	6720	1059.91	25437.89	4.67	17.67	30"	34"	27-1/2"	22-7/8"	9"	4-1/2"	6-21/32"
15864 (2" FNPT)	15865 (2" 150#)	440	10560	1665.58	39973.82	7.33	27.76	29-3/4"	33-3/4"	27-1/4"	22-5/8"	11-1/8"	5-9/16"	7-23/32"
15866 (2" FNPT)	15867 (2" 150#)	620	14880	2346.95	56326.75	10.33	39.12	29-3/8"	33-3/8"	26-7/8"	22-1/4"	13-1/8"	6-9/16"	8-23/32"

*Model number 15842 through 15845 gauges are not equipped with end plates. Model number 15846 through 15851 gauges are equipped with 1/4" thick end plates, but they are round and do not have 7/16" \varnothing mounting holes. See Kenco website for a detailed outline drawing of each model.

ORDERING SYSTEM

Calibration Pots

REQUESTED BY: _____ COMPANY: _____

ADDRESS: _____ CITY: _____ STATE: _____ ZIP: _____

PHONE: _____ FAX: _____ EMAIL: _____

Gauge Model Number

15842 15849 15856 15863
 15843 15850 15857 15864
 15844 15851 15858 15865
 15845 15852 15859 15866
 15846 15853 15860 15867
 15847 15854 15861
 15848 15855 15862

Material of Construction

CS = Carbon Steel
 SS = 316 Stainless Steel
 Other (Please specify)

Seal Material

A = Aflas
 B = Buna-N
 E = Ethylene Propylene
 V = Fluorocarbon
 T = FEP Encapsulated Silicone

Calibration Scale

GPH = Gallons Per Hour
 GPD = Gallons Per Day
 LPH = Liters Per Hour
 LPD = Liters Per Day
 GBV = Gallons By Volume
 LBV = Liters By Volume

- Example Order Number: 15842-SS-V-GPH
- Please contact Kenco to request a quote for options not covered by gauge specifications shown above.