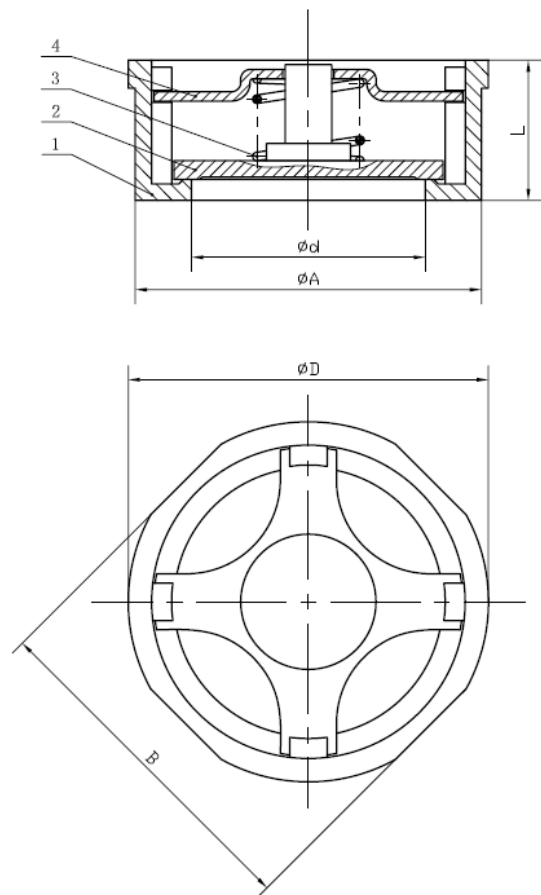


SureSeal S/Steel "Disco" Check Non-Return Valve



SIZE (inch)	1/2"	3/4"	1"	1 1/4"	1 1/2"	2"	2 1/2"	3"	4"	5"	6"
d	15	20	25	30	38	46	62.5	78	96	117	148
A	43	53	63	75	86	94	115	130	152	190	217
B	46	55	65	78	88	98	118	134	154		
D	53	63	73	84	94	107	126	144	164	190	217
L	16.5	19.5	22	28	32	40	46	50	60	82	102

Main Technical Parameter		
Normal pressure	4.0	MPa
Test pressure	Shell test pressure	6.0
	Tightness test	4.4
		MPa
Max working temperature	-15~425	°C
Applicable medium: water, gas, oil, acid		

TECHNICAL SPECIFICATION

- 1 Basic design and manufacture according to ANSI B16.34;
- 2 Face-to-face dimensions complied with DIN3202-K4;
- 3 Flange ends complied with DIN2635;
- 4 Inspection and tested according to API598.

No.	Parts name	Material	No.	Parts name	Material
1	Body	ASTM A351 CF8M	4	Insert	ASTM A276 316
2	Disk	ASTM A276 316	5		
3	Spiring	ASTM A276 316	6		
				1/2"~6"H71W-10/40R WAFER-LIFT CHECK VALVE ASSEMBLY DIAGRAM	
设计	处数	更改文件号	签字	日期	
校对		标准化			
审核		审定			
工艺		批准			
		日期			
				图样标记 数量 重量 比例	
				共 页 第 页	
1/2"~6"H71W-10/40R-00					