

"Disco" Lift Check Wafer Non-Return Valve Stainless Steel

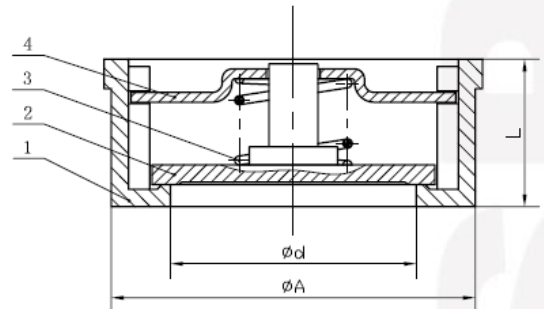
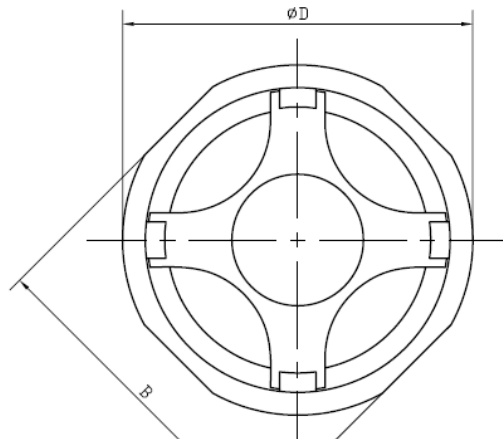


Standard Specifications

- Material: ASTM A351 CF8M
- Working Pressure: 40 Bar
- Pressure Closure Test Pressure: 44 Bar
- Shell Test Pressure: 60 Bar
- Working Temp: -15°C~+425°C

TECHNICAL SPECIFICATION

- 1 Basic design and manufacture according to ANSI B16.34;
- 2 Face-to-face dimensions complied with DIN3202-K4;
- 3 Flange ends complied with DIN2635;
- 4 Inspection and tested according to API598.



Main Technical Parameter			
Normal pressure	4.0	MPa	
Test pressure	Shell test pressure	6.0	MPa
	Tightness test	4.4	
Max working temperature	-15~425	°C	
Applicable medium: water, gas, oil, acid			

No.	Parts name	Material	No.	Parts name	Material
1	Body	ASTM A351 CF8M	4	Insert	ASTM A276 316
2	Disk	ASTM A276 316	5		
3	Spiring	ASTM A276 316	6		

SIZE (inch)	1/2"	3/4"	1"	1 1/4"	1 1/2"	2"	2 1/2"	3"	4"	5"	6"
d	15	20	25	30	38	46	62.5	78	96	117	148
A	43	53	63	75	86	94	115	130	152	190	217
B	46	55	65	78	88	98	118	134	154		
D	53	63	73	84	94	107	126	144	164	190	217
L	16.5	19.5	22	28	32	40	46	50	60	82	102