



Sure Seal

Valve and Pumps Specialists



KG V VALVE

Design Specifications



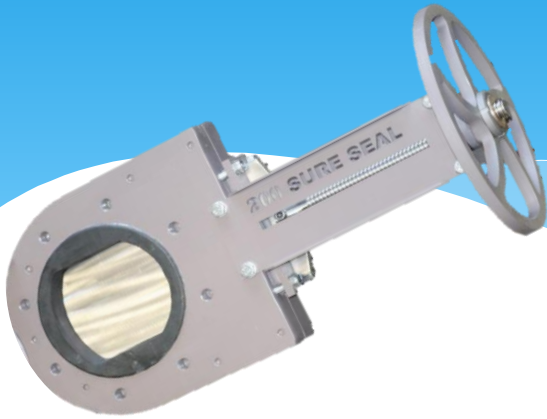
Valve Design:

- Valve design is in accordance with MSS SP-81.
- Valve is bi-directional, complete shut off as per pressure rating
- 12, 16 & 25 Bar _ all Sizes & 40 Bar up to 400mm
- Valve action can be manual, gearbox or actuated.
- Valve is a bonnet less design and can be manufactured to client spec

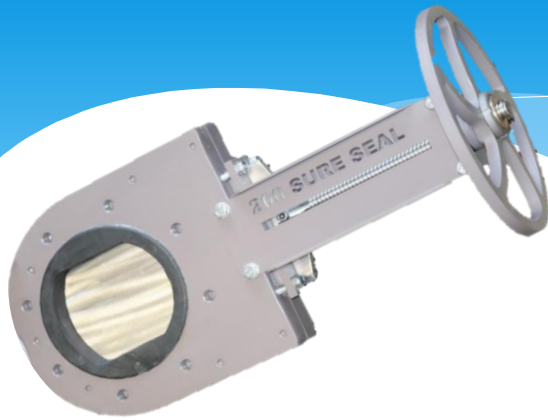
Valve Material list

Body	S355 Carbon Steel / Stainless Steel
Blade	Stainless Steel 304/316/Hardened Material
Hand wheel	Carbon Steel & Stainless Steel
Lining	Natural Rubber/EPDM/Polyurethane/Unlined
Gland	Carbon Steel / Stainless Steel
Pillar	Carbon Steel /Stainless Steel
Spindle	304 Stainless Steel
Rev Nut	GM Bronze
Locking Device (opt)	Mild Steel / Stainless Steel
Fasteners	304 Stainless Steel
Deflector Cone (Opt)	Polyurethane / Stainless Steel 304/316

Dimensions & Pressure Ratings



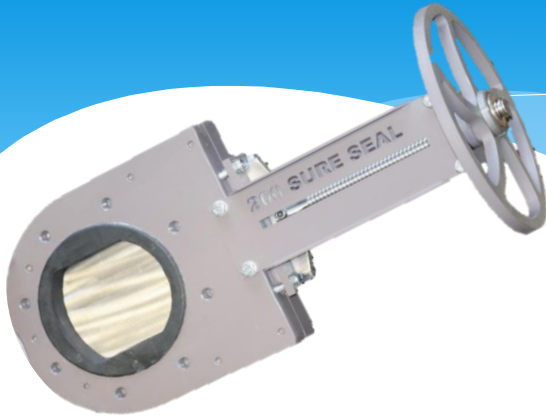
Size (mm)	Unlined F/F	Lined F/F	Length (mm)	Pressure Rating Bar	Mass (kg)
50mm	40	46	430	12	12
80mm	44	50	430	12	12
100mm	59	62	460	12	14
125mm	70	78	560	12	29
150mm	70	78	560	12	29
200mm	72	80	740	12	38
250mm	76	84	900	12	56
300mm	80	88	1050	12	85
350mm	96	104	1170	10	95
400mm	100	108	1320	10	130
450mm	100	112	1460	10	238
500mm	110	122	1630	10	286
600mm	110	122	1850	10	356
700mm	110	122	2050	10	460
800mm	120	132	2270	10	557
900mm	120	132	2520	10	658
1000mm	130	142	2750	10	720



Dimensions & Pressure Ratings

25 BAR

Size (mm)	Lined F/F	Length (mm)	Pressure Rating Bar	Mass (kg)
50mm	50	430	25	14
80mm	60	430	25	14
100mm	60	460	25	18
125mm	80	560	25	35
150mm	80	560	25	35
200mm	80	740	25	47
250mm	90	900	25	68
300mm	90	1050	25	98
350mm	105	1170	25	110
400mm	110	1320	25	148
450mm	114	1460	25	255
500mm	125	1630	25	310
600mm	130	1850	25	382



Dimensions & Pressure Ratings 40 BAR

Size (mm)	Lined F/F	Length (mm)	Pressure Rating Bar	Mass (kg)
50mm	60	430	40	18
80mm	70	430	40	18
100mm	70	460	40	22
125mm	90	560	40	40
150mm	90	560	40	40
200mm	90	740	40	55
250mm	100	900	40	79
300mm	100	1050	40	111
350mm	116	1170	40	132
400mm	130	1320	40	165
450mm	140	1460	40	271
500mm	160	1630	40	338

Sure Seal Linear Actuator



- The Sure Seal Actuator is of linear design.
- This Actuator can be applied to any linear valve design.
- The Sure Seal linear actuator comes in a double acting and spring return option.
- The Actuator is manufactured in different materials as per spec's.
- It is robust and durable. It is also easy to maintain with standard Seal kits supplied by Sure Seal.

Sure Seal Double Acting Actuator Spec Sheet

Cylinder Size	Area	Thrust In Kg. Force	Mass/kg
125mm	28cm ²	585	19 kg
160mm	50cm ²	1 065	24 kg
200mm	314cm ²	1 660	32 kg
250mm	490cm ²	2 575	41 kg
300mm	706cm ²	3 750	52 kg
350mm	962cm ²	5 150	87 kg
400mm	1 256cm ²	6 585	103 kg
450mm	1 590cm ²	8 300	119 kg
551mm	2 374cm ²	12 570	141 kg
750mm	4 657cm ²	16 750	238 kg

Actuator Materials

Endcaps	Mild Steel Galv or 304 SS
Piston	Mild Steel Galv or 304 SS
Piston Rod	303/304/316 SS
Barrel	Fibre Glass
Seals	Nitrile
Ti-Rods	Mild Steel Galv or 304 SS
Fasteners	HT Galv or 304 SS

Spring Return Option available on request