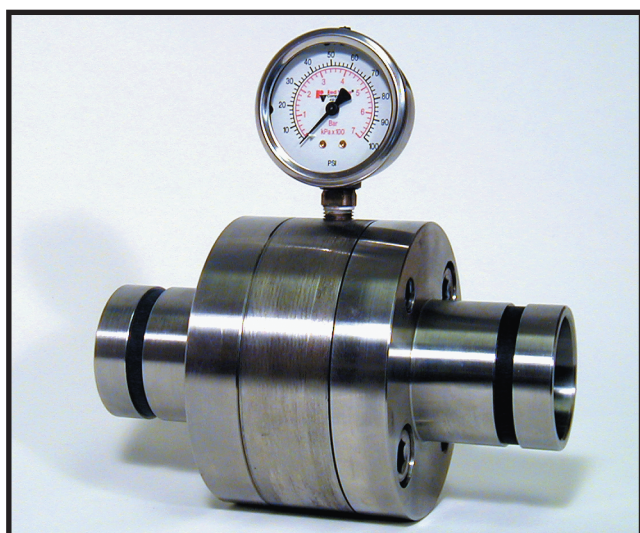


Series 43

Pressure Sensor - Grooved Ends



- ▶ In-line Maintenance, flushed or rodded clean
- ▶ Protects and isolates instrumentation
- ▶ Available with pressure switches and or gauges
- ▶ Self cleaning, flexing action
- ▶ Accuracy $\pm 2\%$ of installed instrument



Red Valve's pressure sensors are now available with grooved ends. This Series 43 was designed to meet the demands of users of grooved end piping systems in the sewage and mining markets. It is currently available in popular sizes - 2", 3", and 4". Other sizes are available upon request.

The Series 43 Pressure Sensor can be furnished with side-or front-mounted gauge.

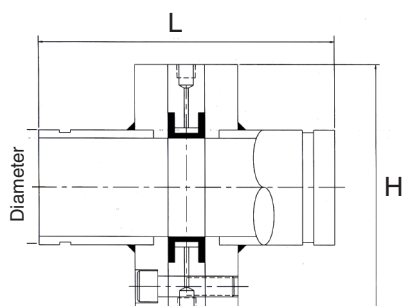
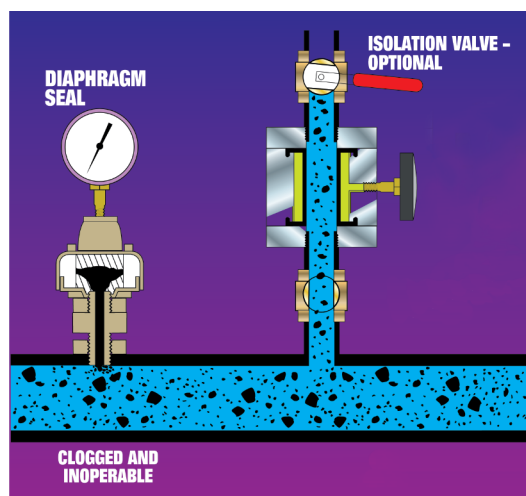
The Series 43 Diaphragm Seal Pressure Sensor offers the user an in-line sensor easily installed in his piping system. When installed perpendicular to the pipeline, the Series 43 Diaphragm Seal can be flushed or rodded clean.

Available factory-filled with complete instrumentation including pressure gauges, pressure switches, and transmitters.

Materials of Construction

- ▶ Body
 - Carbon Steel, Stainless Steel
- ▶ Sleeve Material
 - Pure Gum Rubber, Neoprene, Hypalon
 - Chlorobutyl, Polyurethane, Buna-N, Viton, and EPDM
- ▶ Sensing Liquid
 - Vegetable Oil, Distilled Water, Silicone Oil

The Only Pressure Sensor That Can Be Flushed Without Removal From The Line



Dimensions Series 43

Diameter	L	H	Working Pressure (psi)*
2"	8"	5"	300
3"	9"	7.5"	300
4"	12"	9"	300