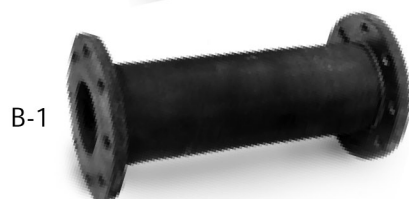


# Redflex® Rubber Pipe

- ▶ Used to absorb vibration
- ▶ Available with arches for special applications
- ▶ Can be bent to connect offset pipes



P-5



B-1

## Materials of Construction

### ▶ ELASTOMERS

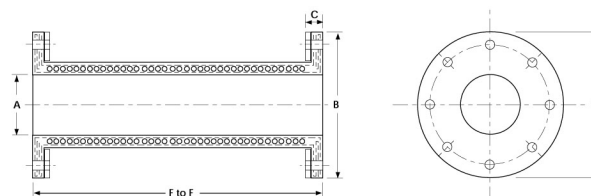
Pure Gum Rubber, Neoprene, Hypalon®, Chlorobutyl, Buna-N, EPDM, and Viton®

Redflex® P-5 Vibration Pipe offers a workable solution to the problem of controlling vibration and reducing noise from pumps, compressors, and other equipment. It minimizes water hammer and eliminates electrolysis. It is also available with arches for special applications.

Redflex® B-1 Rubber Pipe is an economical, abrasion-resistant replacement for steel and cast iron pipe, either in straight lengths or where a specified radius is required. B-1 Rubber Pipe may be used in conveying ore, corrosive chemicals, sand, and other abrasive slurries. B-1 Pipe is available for working pressures from 25 to 150 psi.

Redflex® Rubber Pipe is available with ANSI Class 125 flange drilling, and can be used on 30" Hg vacuum. Standard construction of Redflex® Rubber Pipe is a rubber tube with Nylon fabric reinforcement for maximum continuing temperatures to 180°F. The pipe is covered with synthetic rubber to protect against abrasion and aging.

It is absolutely necessary that rigid metal pipe on both ends of the pipe be properly anchored to eliminate the danger of excessive elongation. If the pipeline is not anchored, control units should be used. Rubber pipe can elongate 7% or better under pressure.



## Dimensions and Specifications Redflex® Rubber Pipe

I.D. A	Minimum F to F	Maximum F to F	Flange Diameter	Flange Thickness B	Bolt Circle Diameter C	Bolt Holes	
						No.	Diameter
1-1/2"	12"	24"	5"	11/16"	3-7/8"	4	5/8"
2"	12"	24"	6"	11/16"	4-3/4"	4	3/4"
3"	12"	36"	7-1/2"	27/32"	6"	4	3/4"
4"	12"	36"	9"	27/32"	7-1/2"	8	3/4"
5"	12"	36"	10"	15/16"	8-1/2"	8	7/8"
6"	18"	36"	11"	31/32"	9-1/2"	8	7/8"
8"	24"	48"	13-1/2"	31/32"	11-3/4"	8	7/8"
10"	24"	48"	16"	1-3/16"	14-1/4"	12	1"
12"	24"	48"	19"	1-7/32"	17"	12	1"

## Minimum Pipe Lengths for Specified Bends

Pipe I.D.	Minimum Radius	Pipe Lengths					
		15°	30°	45°	60°	75°	90°
2"	20"	1' 8"	2' 1"	2' 6"	2' 11"	3' 4"	3' 10"
3"	30"	2'	2' 8"	3' 4"	4"	4' 8"	5' 4"
4"	40"	3'	3' 10"	4' 9"	5' 7"	6'	7' 4"
5"	60"	3' 5"	4' 8"	6'	7' 4"	8' 8"	9' 11"
6"	72"	4' 2"	5' 9"	7' 4"	8' 10"	10' 5"	12'
8"	96"	5'	7' 1"	9' 2"	11' 4"	13' 5"	15' 6"
10"	120"	5' 10"	8' 6"	11' 1"	13' 9"	16' 4"	19'
12"	144"	6' 7"	9' 8"	12' 10"	16'	19' 2"	22' 3"