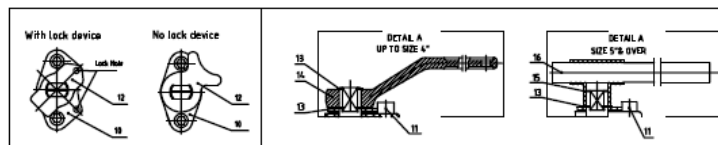
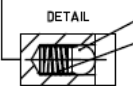
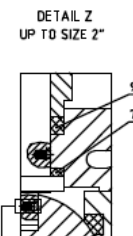
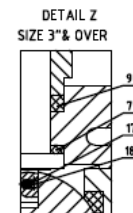
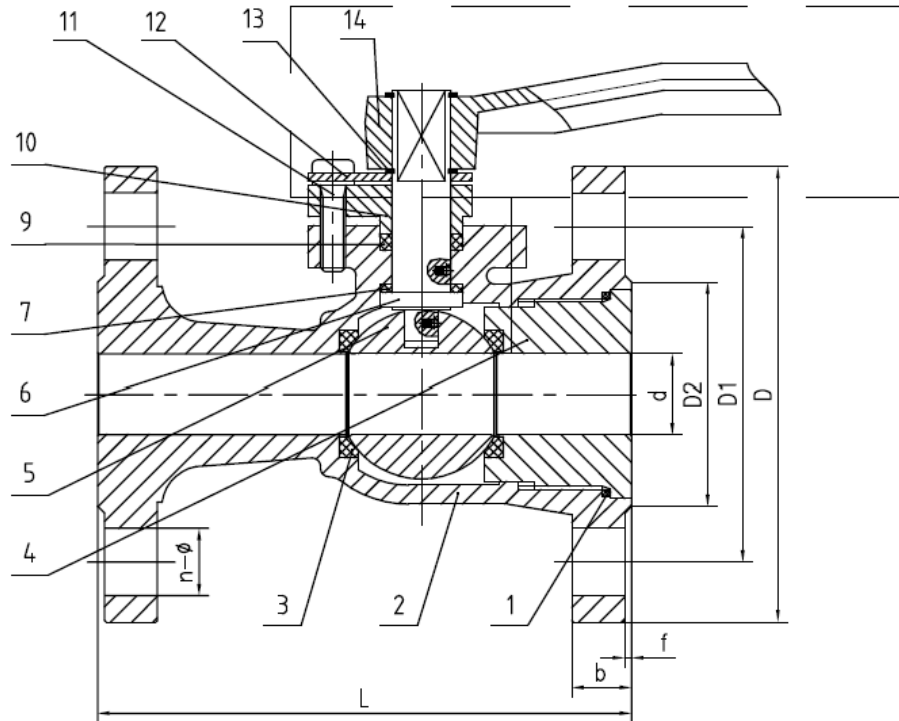


in	mm	d	L	D	D1	D2	b	f	n- ϕ
$\frac{1}{2}$	15	14	108	89	60.5	35	11.5	1.6	4- ϕ 15

CLASS		150LB	MPa
Test Pre- ssure	Shell Test	3.0	
	Seal Test	2.2	
	Air Test	0.6	
Suitable Temp		≤ 150	$^{\circ}\text{C}$
Suitable Media		Water, Oil & Gas	



NO	NAME	MATERIAL	REMARKS
1	GASKET	SPRAL WOUND GASKET	
2	BODY	ASTM A351 CF8M	
3	SEAT	PTFE	
4	CAP	ASTM A351 CF8M	
5	BALL	ASTM A182 F316	
6	STEM	ASTM A276 316	
7	THRUST WASHER	PTFE	
9	PACKING	GRAPHITE	
10	PACKING GLAND	ASTM A276 316	
11	SCREW	ASTM A193 B8	
12	LOCATING WASHER	ASTM A240 410	
13	CIRCLIP	ASTM A240 301	
14	HANDLE	ASTM A216 WCB	
15	WRENCH SUPPORT	ASTM A216 WCB	
16	WRENCH TUBE	Carbon Steel	
17	ANTI-STATIC SPRING	SS304	
18	ANTI-STATIC BALL	SS304	

1PC FLANGED BALL VALVE CLASS 150

Design and Manufacture	API 6D	Test & Inspect	API 598
Face to Face Dimensions	ASME B16.10	Pressure-temperature	ASME B16.34
Flange Ends Dimensions	ASME B16.5	Special	----
Rev. 1.0			2012.08.14
Rev. No.	APPROVE	DESIGN	DESCRIPTION
	ISSUED FOR	DATE	