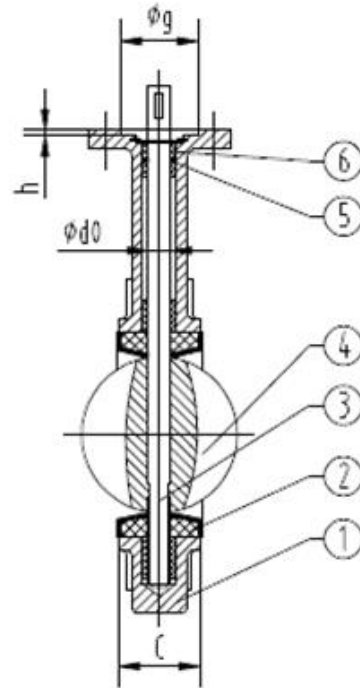
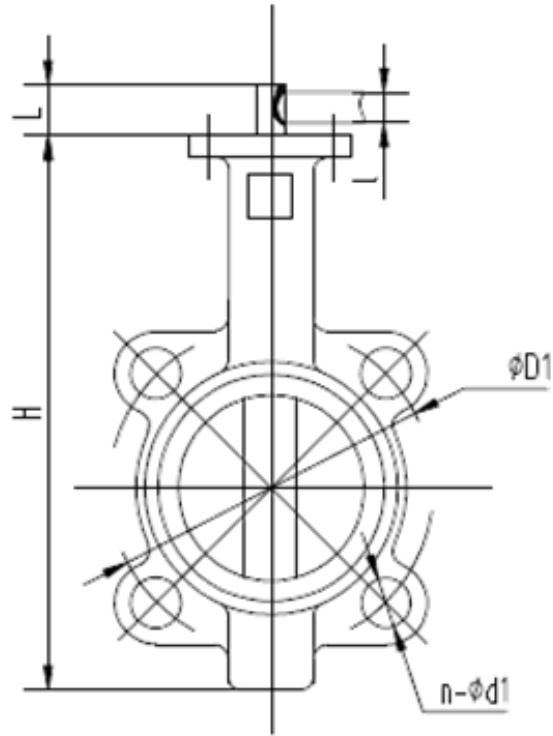
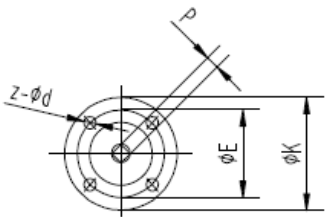


# SureSeal Butterfly Valve SS.SS.PTFE Wafer PN10



MATERIALS OF CONSTRUCTION	
Part Name	Material
Body	CF8M
Stem	SS416
Seat	PTFE
Disc	CF8M
O-Ring	EPDM
Bushing	PTFE

Nominal Pressure		1.0/1.6		Mpa
Testing Pressure	Shell	1.5/2.4		
	Sealing	1.1/1.76		



DIAGONAL SQUARE HEAD

SIZE	DN	H	C	L	P	d0	Key bxl	UPPER FLANGE					PN10		PRESSURE BAR	WEIGHT KG	OPER.	TORQUE (Nm)	
								K	E	z-d	g	h	D1	n-d1				10 <sup>Bar</sup>	6 <sup>Bar</sup>
2	50	241	42	32	9	12.6	3x16	65	50	4-7	35	3	125	4-18	10	2.21	Lever	27.00	-
3	80	276	45.2	32	9	12.6	3x16	65	50	4-7	35	3	160	4(8)-18	10	3.11	Lever	49.50	-
4	100	314	52.1	32	11	15.77	5x19	90	70	4-9	55	3	180	4(8)-18	10	4.01	Lever	84.00	-
6	150	365	55.8	32	14	18.92	5x19	90	70	4-9	55	3	240	4(8)-23	10	6.23	Lever	199.50	-
8	200	435	60.6	45	17	22.1	5x19	125	102	4-12	70	3	295	4(8)-23	10	11.63 / 17.39	Lever / Gearbox	445.50	-
10	250	495	65.6	45	22	22	8x28	125	102	4-12	70	3	350	4(12)-23	10	24.39	G/Box	729.00	-
12	300	579	76.9	45	22	22	8x28	125	102	4-12	70	3	400	4(12)-23	7-8	32.28	G/Box	1048.50	-
14	350	635	76.5	45	22	22	8x28	125	102	4-12	70	3	460	4(16)-23	7-8	40.34	G/Box	-	789.00
16	400	709	86.5	51.2	24	24	10x50	175	140	4-18	100	4	515	4(16)-27	7-8	69.75	G/Box	-	1035.00
18	450	750	105.6	51.2	27	27	10x50	175	140	4-18	100	4	565	4(20)-27	7-8	82.80	G/Box	-	1447.50
20	500	841	131.8	64.2	36	36	10x50	175	140	4-18	100	4	620	4(20)-27	7-8	113.40	G/Box	-	1821.00
24	600	1021	152	70.2	36	36	2-16x60	210	165	4-23	150	5	725	4(20)-30	7-8	180.45	G/Box	-	2919.00