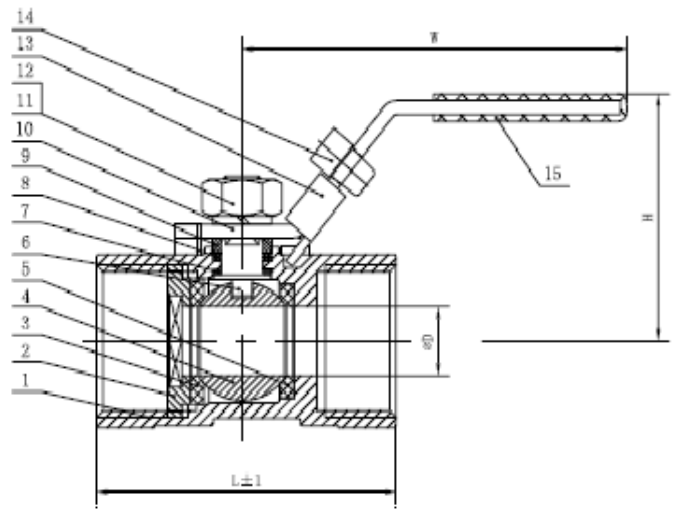


Ball Valve 1-PC S/Steel 1000psi Threaded BSP

1/2"-2" Q11F-1000R



SIZE	DN(mm)	D	H	W	L
1/4"	8	5	31	70	39
3/8"	10	7	36	80	44
1/2"	15	9	42	95	59
3/4"	20	12.5	45	95	60
1"	25	15	54	110	72
1 1/4"	32	20	59	110	77
1 1/2"	40	25	63.5	150	84
2"	50	32	70	150	100

Main Technical Parameter		
Normal pressure	1000	PSi
Test pressure	Shell test pressure	10.5 MPa
	Tightness test	7.7 MPa
	Gas-Tightness test	0.6 MPa
Max working temperature	-20~180 °C	
Applicable medium: water, gas, oil, acid		

TECHNICAL SPECIFICATION

- 1 Basic design and manufacture according to ANSI B16.34;
- 2 NPT Threaded ends complied with ANSI B 1.20.1;
- 3 Rc,Rp&G Threaded ends complied with BS 21/2779, DIN 259/2999,ISO 228 are upon request;
- 4 Inspection and tested according to API598.

No.	Parts name	Material	No.	Parts name	Material
1	Body	ASTM A351 CF8M	9	Packing Gland	ASTM A276 304
2	Bonnet	ASTM A351 CF8M	10	Handle	ASTM A276 304
3	Seat	PTFE+15%FV	11	Spring washer	ASTM A193-B8
4	Ball	ASTM A182 316	12	Handle nut	ASTM A194-B8M
5	Seat	PTFE+15%FV	13	Handle Lock	ASTM A276 304
6	Stem	ASTM A276 316	14	Pin	PLSTIIC
7	Stem Gasket	PTFE	15	Handle Sleeve	PLSTIIC
8	Packing	PTFE	16		
1/2"-2" Q11F-1000R IPC THREAD BALL VALVE ASSEMBLY DIAGRAM					
标记 处数 更改文件号 签字 日期				IPC THREAD BALL ALVE	
设计		标准化		图样标记 数量 重量 比例	
校对		审定			
审核		批准			
工艺		日期		1/2"-2" Q11F-1000R	
				共 页 第 页	