

# 1-Piece Ball Valve Stainless Steel

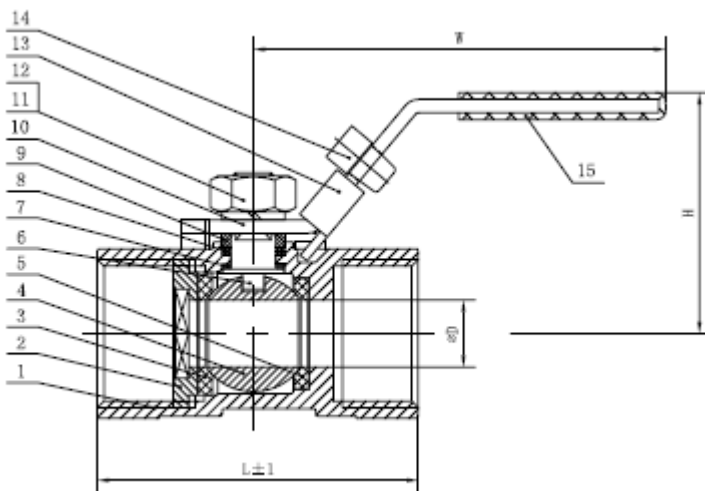
1000psi Threaded BSP



## Standard Specifications

- Design & manufacture to ANSI B16.34
- Inspection & Testing to API 598
- Ends Threaded BSP

Main Technical Parameter		
Normal pressure	1000	PSi
Test pressure	Shell test pressure	10.5
	Tightness test	7.7
	Gas-Tightness test	0.6
Max working temperature	-20~180	°C
Applicable medium: water, gas, oil, acid		



SIZE	DN (mm)	D	H	W	L
¼"	8	5	31	70	39
⅜"	10	7	36	80	44
½"	15	9	42	95	59
¾"	20	12.5	45	95	60
1"	25	15	54	110	72
1¼"	32	20	59	110	77
1½"	40	25	63.5	150	84
2"	50	32	70	150	100

No.	Parts name	Material	No.	Parts name	Material
1	Body	ASTM A351 CF8M	9	Packing Gland	ASTM A276 304
2	Bonnet	ASTM A351 CF8M	10	Handle	ASTM A276 304
3	Seat	PTFE+15%FV	11	Spring washer	ASTM A193-B8
4	Ball	ASTM A182 316	12	Handle nut	ASTM A194-B8M
5	Seat	PTFE+15%FV	13	Handle Lock	ASTM A276 304
6	Stem	ASTM A276 316	14	Pin	PLSTIIC
7	Stem Gasket	PTFE	15	Handle Sleeve	PLSTIIC
8	Packing	PTFE	16		