

### Series 35—Flanged Check Valve

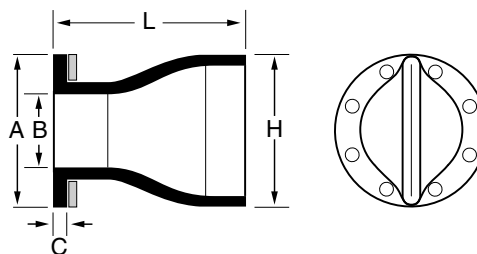
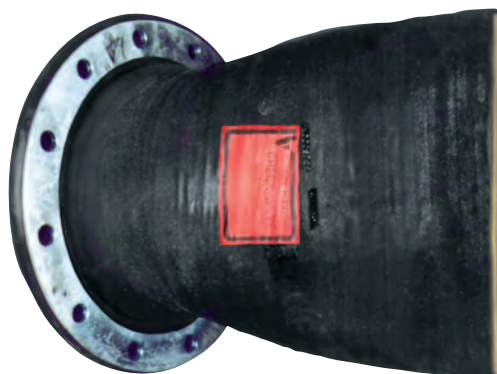
#### Materials of Construction

- Pure Gum Rubber, Neoprene, Chlorobutyl, Buna-N, Polyurethane  
Hypalon, Viton, EPDM, Food Grade
- NSF61 Certified for Potable Water
- Galvanized Steel, Stainless Steel

The Tideflex® Technologies Series 35 Check Valve is manufactured identically to the Tideflex® Check Valve, with the addition of an integral elastomer flange as part of the valve. The standard flange size drilling conforms to ANSI B16.5 and ANSI B16.47, Class 150 standards. All other domestic and international standards, as well as customer specified flange dimensions, are available. The Series 35 Check Valve is furnished complete with 3/8" thick steel back-up rings for installation.

In some applications and installations, a slip-over pipe Check Valve is not feasible because of an existing flange in the piping system or an existing flange cemented in the outfall piping system vault. In these cases, the Series 35 Check Valve is the solution.

The Tideflex® Technologies Series 35 Check Valve is simple in design, with only one part - the all-rubber duck bill check sleeve. There are no seats or interference fits to corrode or freeze valve operation, making the Series 35 virtually maintenance free. The Series 35 seals completely around solids, making it ideal for fly ash, raw sewage, sludge, lime, mining slurries, and many other abrasive and corrosive slurries.



#### DIMENSIONS SERIES 35

ANSI FLANGE SIZE	FLANGE O.D. A	INSIDE DIAMETER B	FLANGE THICKNESS C	MAXIMUM LENGTH L	MAXIMUM HEIGHT H
1/2"	3-1/2"	1/2"	1/2"	2-1/2"	1-1/4"
3/4"	3-7/8"	3/4"	1/2"	3"	1-1/2"
1"	4-1/4"	1"	1/2"	3"	1-1/2"
1-1/4"	4-5/8"	1-1/4"	1/2"	5-3/4"	2-3/4"
1-1/2"	5"	1-1/2"	1/2"	5-3/4"	3-5/8"
2"	6"	2"	1/2"	5-3/4"	3-5/8"
2-1/2"	7"	2-1/2"	1/2"	7-1/2"	4-5/8"
3"	7-1/2"	3"	3/4"	9"	5-3/8"
4"	9"	4"	3/4"	12"	7"
5"	10"	5"	3/4"	15-1/4"	8-7/8"
6"	11"	6"	1"	15-5/8"	10-3/8"
8"	13-1/2"	8"	1"	16-1/2"	13"
10"	16"	10"	1"	21-1/2"	16-7/8"
12"	19"	12"	1"	26-1/2"	20-1/8"
14"	21"	14"	1"	25-3/8"	21-1/2"
16"	23-1/2"	15-1/4"	1"	27-1/2"	22-1/4"
18"	25"	17-1/2"	1-1/2"	30"	26-3/4"
20"	27-1/2"	19-1/4"	1-1/2"	32-3/8"	32-1/2"
22"	29-1/2"	21-1/4"	1-1/2"	35-1/2"	32-1/2"
24"	32"	24"	1-1/2"	40-1/2"	37"
30"	38-3/4"	29-1/2"	1-1/2"	43"	49-1/2"
32"	41-3/4"	32"	1-1/2"	51-3/8"	46"
36"	46"	35-1/4"	1-1/2"	54"	58"
42"	53"	42"	2"	60-1/4"	72-1/2"
48"	59-1/2"	48"	2"	59"	77-1/2"
60"	73"	60"	2"	72"	96-3/4"
72"	86-1/2"	72"	2"	95"	102"
84"	99-3/4"	84"	2"	92"	110-1/2"